

NATIONAL SUMMIT ON INTERDISTRICT SCHOOL DESEGREGATION

# Practitioner's Power Lunch “Mix It Up” Knowledge Café

*Friday, January 16, 2009*

FACILITATED BY

Samantha Elliott Briggs, Ph.D.

*Director of Mix It Up*





# What is a Knowledge Café?

Creative Conversation · Share Ideas · Gain Deeper Understanding

# Topics to explore today

## Citizenship Education

*Meira Levinson* HARVARD UNIVERSITY

## School Discipline

*Susan Eaton & Johanna Wald* CHARLES HOUSTON HAMILTON INSTITUTE

## Teacher Training

*Willis Hawley* UNIVERSITY OF MARYLAND

# Break for Lunch



# Round 1



Take a moment to think about what you were doing the year your penny was minted. Take turns sharing stories.

# Citizenship Education

*Meira Levinson* HARVARD UNIVERSITY

# School Discipline

*Susan Eaton & Johanna Wald* CHARLES HOUSTON HAMILTON INSTITUTE

# Teacher Training

*Willis Hawley* UNIVERSITY OF MARYLAND



# Break for Dessert



## Round 2



Take a moment to think about what you were doing the year your penny was minted. Take turns sharing stories.

# What is Mix It Up at Lunch Day?

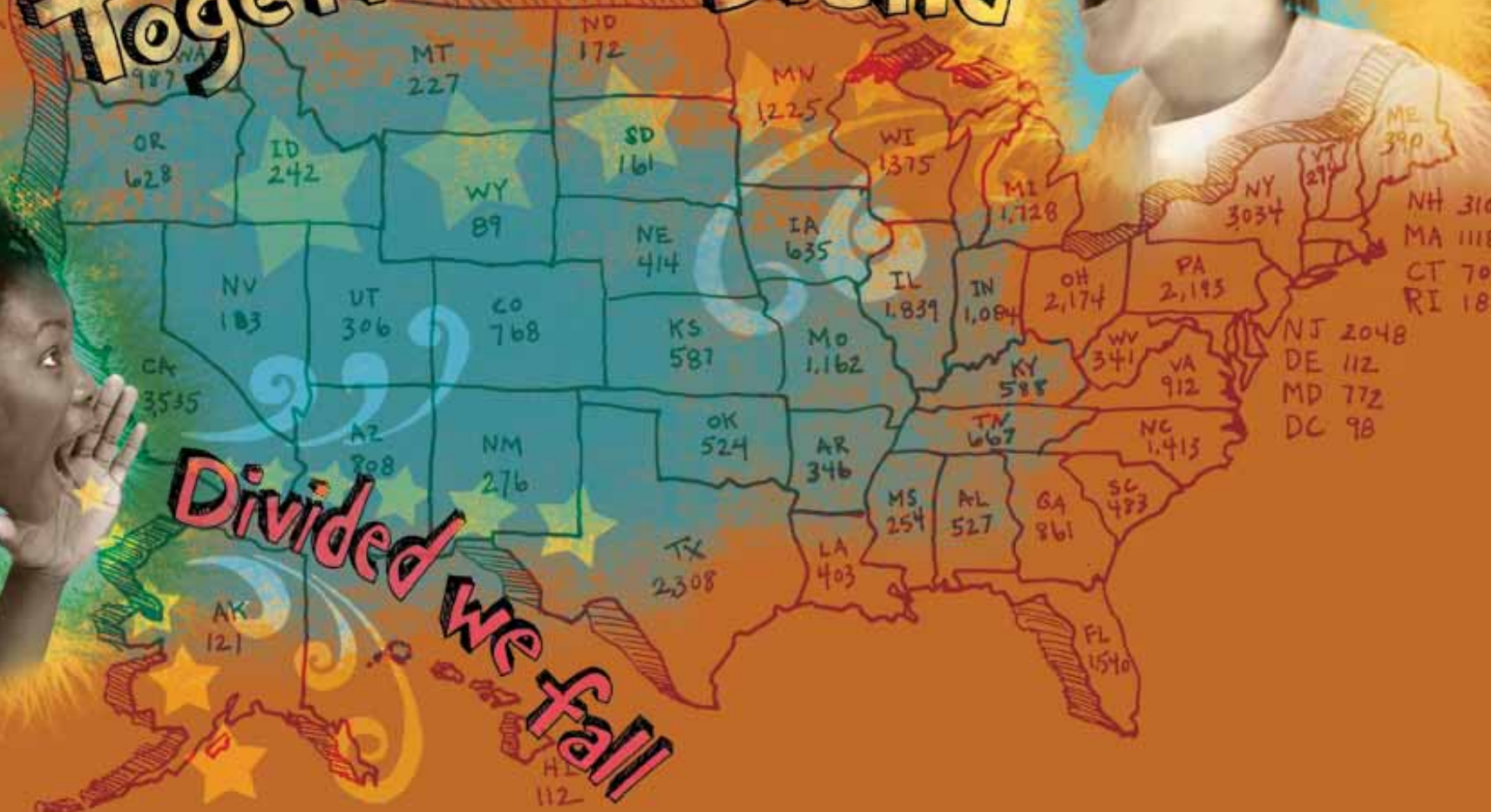


Mix It Up at Lunch Day is a simple call to action: take a new seat in the cafeteria. By making the move, students can cross the lines of division, meet new people and make new friends.

# Together we Stand

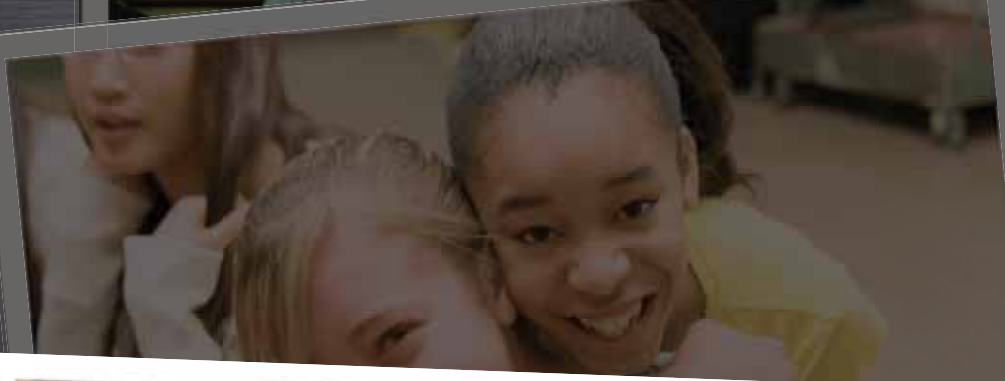
# Divided we fall

Armed Forces 22  
EV. Middle East, Africa, Canada  
Armed Forces Pacific 10  
Guam 1  
New Brunswick 1  
Ontario 20  
Puerto Rico 1  
Virgin Islands 1





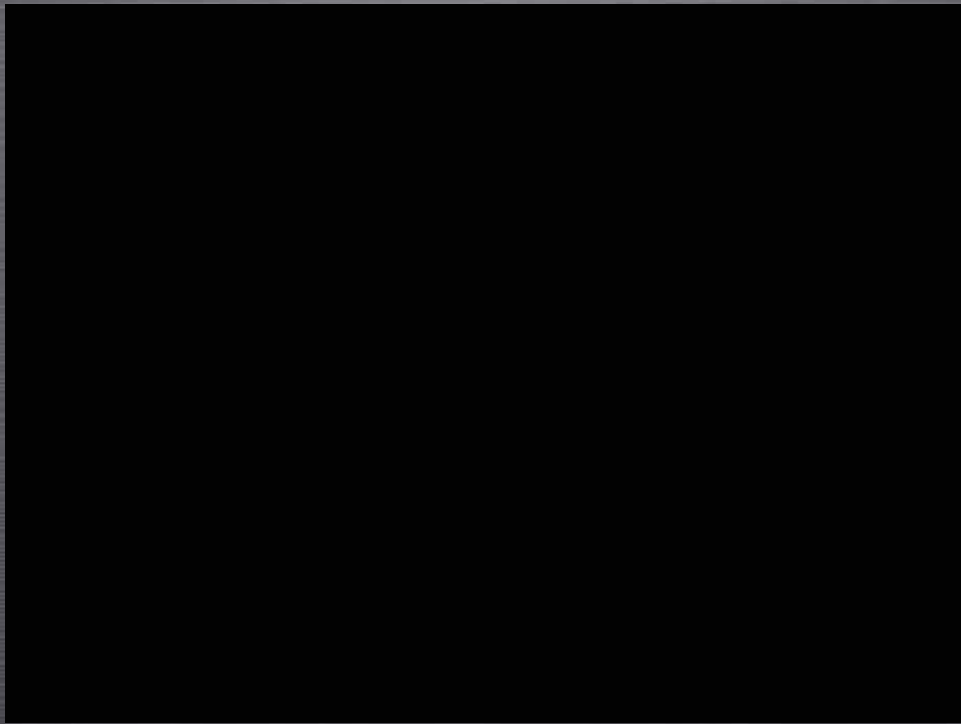
*70%* of students named the cafeteria as the school setting where social boundaries are most clearly drawn.



*95%* of students believe Mix It Up at Lunch Day prompted students to interact with people outside of their normal social circles.



*92%* of respondents believe Mix It Up at Lunch Day increased awareness about social boundaries and divisions within school.



TEACHING  
TOLERANCE



A PROJECT OF THE SOUTHERN POVERTY LAW CENTER