

Charles  
Hamilton  
Houston

INSTITUTE FOR  
RACE & JUSTICE

HARVARD LAW SCHOOL

[www.charleshamiltonhouston.org](http://www.charleshamiltonhouston.org)

Professor Charles J. Ogletree, Jr., Executive Director

*STILL SEPARATE, STILL  
UNEQUAL*

*Race, School & Solutions for the 21<sup>st</sup> Century*

# CHANGING DEMOGRAPHICS

## *RACE AND ETHNICITY*

- 42 percent of public school kids are children of color. Up from 22 percent in 1972.
- The increase largely reflects growth in the Latino population



# Fair Housing Commission 2008

**“Discrimination  
*continues to be  
endemic,  
intertwined into  
the very fabric  
of our lives.*”**



The Future of Fair Housing: Report of the National  
Commission on Fair Housing and Equal  
Opportunity. December, 2009

# In other words, race still matters

The hearings exposed the fact that despite strong legislation, **past and ongoing discriminatory practices in the nation's housing and lending markets** continue to produce **extreme levels of residential segregation** that result in significant disparities between minority and non-minority households, in access to good jobs, ***quality education***, homeownership attainment and asset accumulation.

# 'TYPICAL' POOR CHILDREN

- THE **TYPICAL POOR WHITE CHILD** LIVES IN A NEIGHBORHOOD THAT IS **13.6 PERCENT POOR**.
- THE **TYPICAL POOR BLACK CHILD** LIVES IN A NEIGHBORHOOD THAT IS **30 PERCENT POOR**.
- THE **TYPICAL LATINO CHILD** LIVES IN A NEIGHBORHOOD THAT IS **26 PERCENT POOR**.

(Acevedo-Garcia D, et al. Toward a policy-relevant analysis of geographic and racial/ethnic disparities in child health. *Health Affairs* 27(2), 2008. )

# “LAYERS OF DISADVANTAGE”

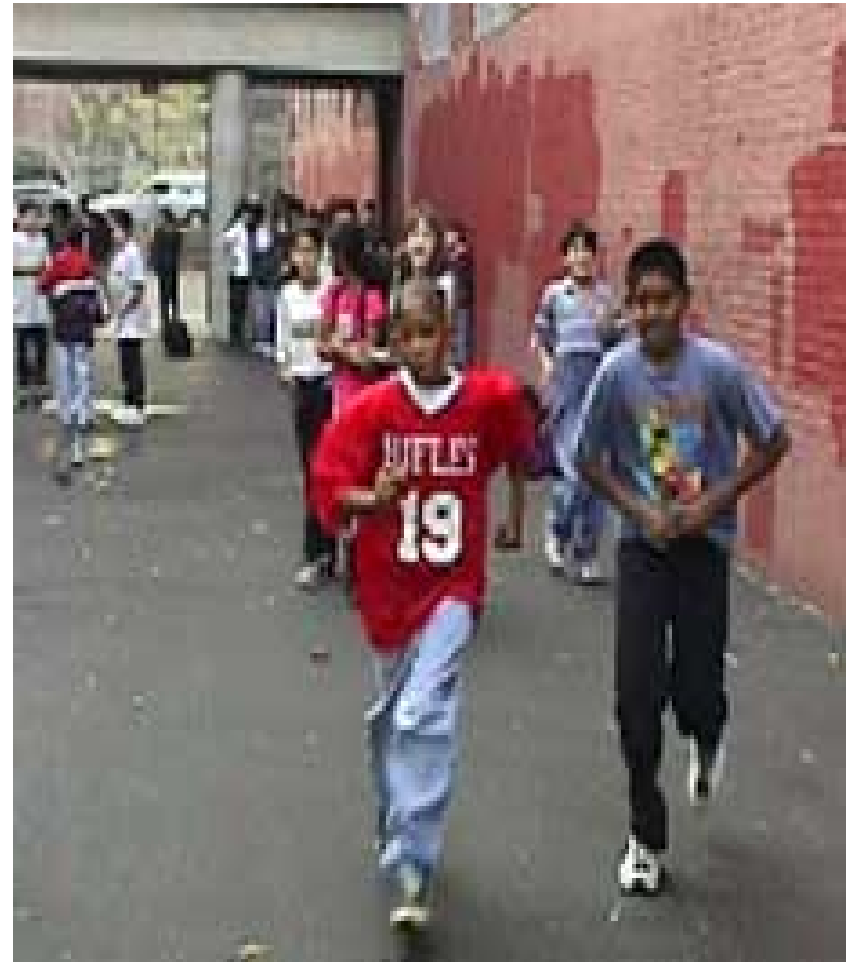
76 PERCENT OF **ALL** BLACK CHILDREN AND 70 PERCENT OF **ALL** LATINO CHILDREN LIVE IN NEIGHBORHOODS WITH POVERTY RATES HIGHER THAN IN NEIGHBORHOODS OF THE WORST-OFF WHITE CHILDREN.



# FOR HYPER-SEGREGATED URBAN DISTRICTS, DESEGREGATION IS OFF THE TABLE

## % African American & Latino

- Hartford: 95
- Detroit: 96
- New York City: 73
- Newark: 91
- Boston: 86
- Cleveland: 82
- Chicago: 89



# SCHOOL SEGREGATION TODAY

- In 2006-2008, about 40 percent of Black children and 40 percent of Latino children attended schools where 90 to 100 percent of their classmates were Black or Latino.



(Orfield, Gary. Reviving the Goal of an Integrated Society: A 21<sup>st</sup> Century Challenge. The Civil Rights Project. January, 2009)



# IN 2007, a "TYPICAL" WHITE CHILD ATTENDED A SCHOOL THAT WAS 77 PERCENT WHITE



NATALIE M. LIPMAN SCHOOL  
MRS. CARMICHAEL  
GRADE 8, 1962

# Q - WHO GOES TO THE SCHOOLS WITH THE HIGHEST LEVELS OF POVERTY?

(Public Schools that are 70 TO 100  
PERCENT POOR)

(Orfield, Gary. Reviving the Goal of an Integrated Society: A 21<sup>st</sup> Century Challenge. The Civil Rights Project.  
January, 2009)

40 PERCENT of BLACK STUDENTS

40 PERCENT of LATINOSTUDENTS

ONLY

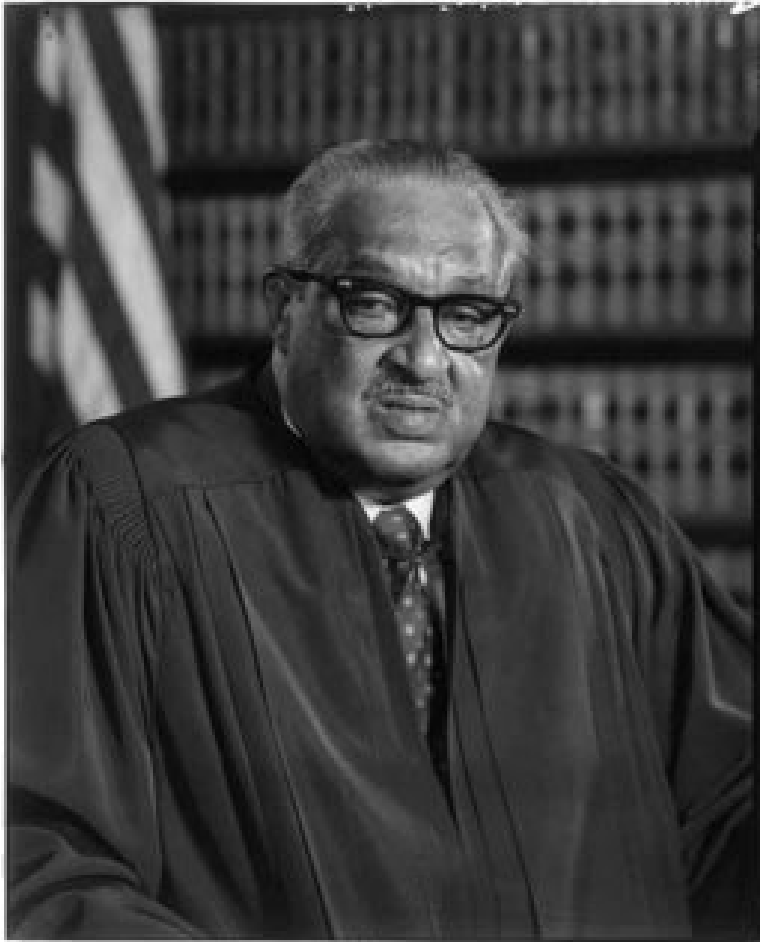
6.6 PERCENT OF WHITE STUDENTS

ATTEND SCHOOLS WHERE 70 TO 100  
PERCENT OF STUDENTS ARE POOR

Orfield, Gary. Reviving the Goal of an Integrated Society: A 21<sup>st</sup> Century Challenge. The Civil Rights Project. January, 2009



# Finding a Better Way



In the short run, it may seem to be the easier course to allow our great metropolitan areas to be divided up each into two cities -- one white, the other black -- but it is a course, I predict, our people will ultimately regret. I dissent. —  
Thurgood Marshall